

EXPLORE

PAIN T 3D



PAINT 3D



UNIVERSAL COLORING SYSTEM

Paint 3D is a universal coloring system for the individual staining and glazing of dental ceramics in the CTE range from 9.4 to $17.5 \times 10^{-6}/K$. Ideally suited for milling, pressing and veneering ceramics - including zirconium oxide, lithium disilicate and other glass ceramics - Paint 3D offers a wide range of applications and maximum flexibility in everyday laboratory work.



3D EFFECT PASTES

The innovative 3D effect pastes open up new creative possibilities and give surfaces an impressive three-dimensional depth and texture. Whether for subtle accents or striking effects: These pastes make it possible to transform even the smallest details into realistic dental works of art.



EASY HANDLING

Thanks to their special consistency, the pastes can be applied and modeled effortlessly, making them ideal for demanding projects where precision and efficiency are paramount. Paint 3D supports time-saving workflows without compromising on esthetics or attention to detail - for professional results at the highest level.

EXPLORE **PAINT 3D**

DENTIN



Dentin



Paint 3D
Dentin **Bleach**

Pigment concentration
High



Application example

- › Adjustment of the BL dentin colors
- › Reinforcement of the chroma
- › Setting accentuations
- › Mixing with other colors



Paint 3D
Dentin **A**

Pigment concentration
High



Application example

- › Adjustment of the A dentin colors
- › Reinforcement of the chroma
- › Setting accentuations
- › Mixing with other colors



Paint 3D
Dentin **B**

Pigment concentration
High



Application example

- › Adjustment of the B dentin colors
- › Reinforcement of the chroma
- › Setting accentuations
- › Mixing with other colors



Paint 3D
Dentin **C**

Pigment concentration
High



Application example

- › Adjustment of the C dentin colors
- › Reinforcement of the chroma
- › Setting accentuations
- › Mixing with other colors



Paint 3D
Dentin **D**

Pigment concentration
High



Application example

- › Adjustment of the D dentin colors
- › Reinforcement of the chroma
- › Setting accentuations
- › Mixing with other colors

EXPLORE **PAINT 3D** ENAMEL



Enamel



Paint 3D
Enamel **Cloud**

Pigment concentration
Low



Application example

- › Imitation of whitish areas, e.g. calcifications, large bright areas
- › Increasing the brightness value of other colors



Paint 3D
Enamel **Sky**

Pigment concentration
Low



Application example

- › Imitation of slightly bluish shimmering, translucent areas in the incisal region
- › Creating translucent-looking accentuations
- › Mixing with other colors



Paint 3D
Enamel **Sea**

Pigment concentration
Low



Application example

- › Imitation of bluish shimmering, translucent areas in the incisal region
- › Creating translucent-looking accentuations
- › Mixing with other colors



Paint 3D
Enamel **Deep Sea**

Paint 3D
Enamel **Smoke**

Paint 3D
Enamel **Shadow**

Pigment concentration
Low

Pigment concentration
Low

Pigment concentration
Low



Application example

- › Imitation of strongly bluish shimmering, translucent areas in the incisal region
- › Creating translucent-looking accentuations
- › Mixing with other colors

Application example

- › Imitation of slightly grayish shimmering, translucent areas in the incisal region
- › Creating translucent-looking accentuations
- › Reducing the brightness value of other colors

Application example

- › Imitation of slightly violet shimmering, translucent areas in the incisal region
- › Creating translucent-looking accentuations
- › Mixing with other colors

EXPLORE **PAINT 3D** EFFECT



Effect



Paint 3D
Effect **Peach**

Pigment concentration
Medium



Application example

- › Imitation of mamelons
- › Creating salmon-colored accents
- › Mixing with other colors



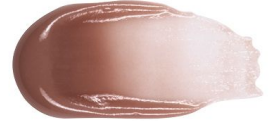
Paint 3D
Effect **Peanut**

Pigment concentration
Medium



Application example

- › Imitation of the halo effect
- › Creating cream-colored accents
- › Mixing with other colors



Paint 3D
Effect **Apricot**

Pigment concentration
Medium



Application example

- › Imitation of a natural transition to the gingiva
- › Creating reddish accents
- › Mixing with other colors

EXPLORE **PAINT 3D**

INTENSE EFFECT



Intense Effect



Paint 3D
Intense Effect **Milk**

Pigment concentration
High



Application example

- › Creating intense white accents, e.g. calcifications, enamel cracks
- › Mixing with other colors



Paint 3D
Intense Effect **Vanilla**

Pigment concentration
High



Application example

- › Creating intensive cream-colored accents, e.g. calcifications, enamel cracks, mamelons, halo effect
- › Mixing with other colors



Paint 3D
Intense Effect **Caramel**

Pigment concentration
High



Application example

- › Creating intensive gold-colored accents, e.g. occlusal, interdental
- › Mixing with other colors



Paint 3D
Intense Effect **Hazelnut**

Pigment concentration
High



Paint 3D
Intense Effect **Espresso**

Pigment concentration
High



Application example

- › Creating intensive copper-colored accents, e.g. occlusal, interdental
- › Mixing with other colors



Application example

- › Creating intensive dark brown accents, e.g. caries
- › Mixing with other colors